

S1500E

Open cooling towers



Key benefits

- Extreme low sound levels matching centrifugal fan units with attenuation.
- Unmatched energy savings with less than 2 years payback.
- Low maintenance and easy inspection, 25% reduction in annual maintenance costs.



S1500E characteristics

Cross flow, Axial fan, induced draft

Capacity range

8 - 215 l/s

40% more capacity

Water distribution

Gravity with **variable flow**

Maximum entering water temperature

55°C standard fill

60°C with alternative fill

Typical applications

- Medium HVAC and industrial applications



- Counterflow and crossflow unit replacements
- Tight enclosures
- Installations requiring a single air inlet

Extreme low sound levels

- A choice of various fan types such as low noise axial fans and [Wisper Quiet fans](#) for minimal surrounding noise.
- [BACross III fill](#) smoothly guides the water all the way into the basin **without water splash noise**.
- Single-side air inlet, and a **quieter tower rear** for more noise-sensitive areas.
- Try our **XES1500E** line with smaller motors for **extremely low noise** levels.
- Factory designed, tested and rated [sound attenuation](#) is available on air inlet to cut operation noise even further.

Unmatched energy savings

- **Evaporative cooling** for system-wide energy saving at lower operating temperatures.
- **Axial fan** uses **half the energy** of similar centrifugal fan units.
- **Save pump kW!** Less pump head for this gravity water distribution system. In periods of reduced load, **weir dams** close off partly the hot water basin **saving pump energy**.
- [BACross III fill](#) – factory-configured for maximum water/air contact and low air pressure drop for optimal cooling tower efficiency with limited energy consumption.
- **High efficiency fan motors**
- **Multiple fan motor system** covers independent fan motor and drive assembly per fan. In case of fan failure, the other fan(s) can still operate.
- **XES1500E** line with smaller motors to reduce electricity consumption for the same cooling capacity.

Low maintenance and easy inspection

- Unrivalled safe and **comfortable access**. Inspect and maintain the tower **while standing** and without crawling.
- The S1500E has a **spacious plenum** (internal area) and **easy inspection/maintenance access**.
- Access via **large hinged door**. With optional [internal walkway](#): no basin draining needed for unit interior or fill pack inspection.
- Inspection of **water distribution system** (hot water basin and nozzles) possible outside the unit, during **operation**.
- Optional [distribution basin covers](#) prevent debris collecting in the unit.
- You can inspect and clean easily the core of the [BACross III fill](#) **sheet by sheet without dismantling**. BACross design reduces fouling. Optional [telescopic fill supports](#) for easy replacement of the sheets.
- The fill includes integrated **drift eliminators** tested and certified by Eurovent.
- Self-cleaning cold water basin and fill above **sloped basin** to flush out dirt and debris.
- **Fans** are easily accessible from the in- and outside
- Optional [clean out port](#) **helps remove** silt and sludge from the cooling tower basin.
- Removable **suction strainer** anti-vortex hood.
- Optional [sump sweeper piping](#) prevents sediment collecting in the cold water basin.



- Various corrosion-resistant materials, including the unique [Baltibond hybrid coating](#) for guaranteed long service life.
- Optional [motor removal davit](#) for easy motor replacement.

Superb hygiene control

- Proper hygiene inspection **without unit shut-down**.
- Easy-clean and easy-inspect S1500E towers **reduce hygiene risks** from bacteria (eg Legionella) or biofilm inside.
- Self-cleaning cold water basin and fill above **sloped basin** to flush out dirt and debris.
- [BACross III fill](#) for reduced fouling and easy sheet by sheet cleaning without dismantling.
- The fill includes integrated **drift eliminators** tested certified by Eurovent.
- **Combined inlet shields** block sunlight to prevent biological growth in the tower, filter the air and stop water splashing outside.
- Optional [distribution basin covers](#) prevent debris collecting in the unit.
- Optional [clean out port](#) **helps remove** silt and sludge from the cooling tower basin.
- Optional [sump sweeper piping](#) **prevents sediment collecting in the cold water basin**.

Ideal replacement unit

- **Single side air inlet and discharge**, fits in most enclosures.
- S1500E are **ideal replacement units**. Small fan motors and low spray pressure allow **re-use of existing electrical cabinet**.
- S1500E cooling towers are factory-built and shipped in 1 or 2 sections to reduce the overall size and weight, allowing **easy on-site section assembly** with smaller crane.

Year round reliable operation

- Optimal unit condition thanks to **inspection during operation**.
- Proven **freeze free** winter operation.
- The thermal performance of S1500E is tested and [certified by Eurovent](#).
- **Multiple fan motor system** covers independent fan motor and drive assembly per fan. In case of fan failure, the other fan(s) can still operate.
- Various **corrosion-resistant** materials, including the unique [Baltibond[®] hybrid coating](#) for guaranteed long service life.

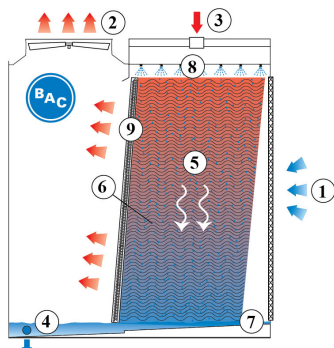
Interested in the S1500E cooling tower for cooling your process water? Contact your local [BAC representative](#).

Downloads

- [S1500E open cooling tower](#)
- [S1500E Open Cooling Tower - brochure](#)
- [Operating and Maintenance S1500E](#)
- [Rigging and Installation S1500E](#)
- [Rigging and installation S1500E accessories and options](#)
- [Retrofit Opportunities for S1500E](#)
- [Spare Parts for S1500E](#)
- [BAC's S1500 open cooling tower is supporting the world's first hydrogen plant in steel production](#)
- [S1500E Eurovent certificate](#)
- [Eurovent Certificate - BAC Drift Eliminators - BACross III](#)

Principle of operation

Open cooling towers



Warm process **water (3)** from the heat source enters the **water distribution system (8)** at the top of the cooling tower where it is distributed over the **fill** or heat transfer media **(6)**. At the same time **axial fans**, located at the top of the unit, draw the **air (1)** from the side of the unit over the fill. **Combined inlet shields** protect the tower from debris being drawn into the unit. While the warm process water contacts the cold air the latter heats up and part of the process water is evaporated which removes the heat from the remaining water. The **sloping sump (7)** or basin collects the cooled water after which it returns to the **heat source of the process (4)**. The warm saturated **air (2)** first passes through the **drift eliminators (9)**, which remove water droplets from the air, and then exits the tower at the top.

You want to use the S1500E cooling tower to cool your process water? Contact your local [BAC representative](#) for more information.

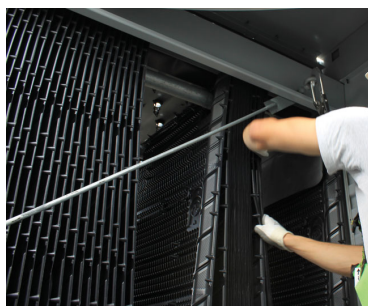
Construction details

Open cooling towers



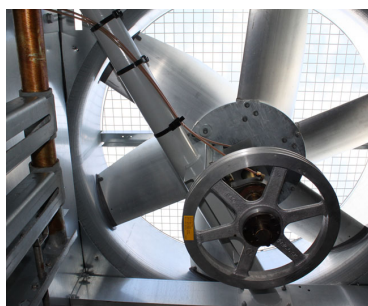
1. Material options

- Heavy-gauge hot-dip galvanized steel is used for external unit steel panels and structural elements featuring [Baltiplus Corrosion Protection](#).
- The unique [Baltibond® hybrid coating](#) is an optional extra. A hybrid polymer coating for longer service life, applied pre-assembly to all hot-dip galvanized steel components of the unit.
- [Optional stainless steel](#) panels and structural elements of type 304L or 316L for extreme applications.
- Or the economical alternative: a **water-contact stainless steel cold water basin**. Its key components and the basin itself are stainless steel. The rest is protected with the Baltibond® hybrid coating.



2. Heat transfer media

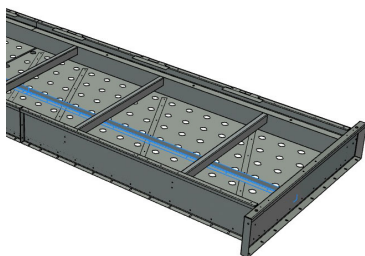
- Our heat transfer media is factory-tested and patented [BACross fill](#) with integrated **drift eliminators** certified by Eurovent. Its thermal performance is proven during comprehensive [lab thermal performance tests](#), and it offers you unrivalled system efficiency.
- Patented BACross fill **eliminates water splash-out** and allows freeze free winter operation. The fill pack includes individual **sheets**. Sheets are easy to inspect and clean inside the tower without dismantling, eliminating the need for frequent fill replacement. Optional telescopic support for easy fill replacement.
- In self-extinguishing **plastic**, which will not rot, decay or decompose.
- For operation above 55°C, try our **optional high temperature fill**, usable with intake water up to 60°C.



3. Air movement system

- S1500E's feature a **multiple fan system** covering independent fan motor and drive assembly per fan for independent fan operation for **extra capacity control** or **stand-by fan** in case of fan failure. Together with the heavy duty fan shaft bearings and the BAC **Impervix** motor, this guarantees optimal and year-round operational efficiency.
- The smaller diameter fans on the 2.4m wide units are **direct driven**. The larger fans on the rest of the product line are equipped with a **belt drive system**.
- **Fan(s)** in corrosion resistant aluminum, encased in fan cylinder with removable fan guard. To reduce noise even further, choose for a low noise or [Whisper Quiet fan](#) reducing the noise even further with minimal impact on thermal performance.

- Easy removable UV-resistant plastic **combined inlet shields** at air inlet. Sunlight block to prevent biological growth in tower, air filter and water splash-out stop.



4. Water distribution system

These consist of:

- **Low pump gravity water distribution basin** with wide non-clog plastic nozzles for uniform water distribution. You can easily clean and flush both nozzles and basin.
- **Weir dams** in the hot water basin for variable flow. These close off partly the hot water basin in periods of reduced load, resulting in **up to 50% power savings** on process pump and ensuring **freeze free operation**.
- A **sloped cold water basin** with:
 - large hinged and inward swinging **access door**
 - anti-vortexing **strainers** and **make up** both easily accessible from air inlet side.
- Optional internal walkway for easy access to the interior of the unit.

Need more information? Contact your local [BAC representative](#).

Options and accessories

Open cooling towers

Below is a listing of the main S1500E options and accessories. If your required option or accessory is not listed, look no further than your [local BAC representative](#).



Sound attenuation

Reducing noise at air **intake and discharge points** brings us closer to silent cooling equipment.



Whisper Quiet fan

Reduce noise even further with **ultra low-noise factory-tested fans**.



Removable fill

Telescopic fill support facilitates **fill replacement** on-site.



Basin heater package

Thanks to our factory-installed heaters, the water stays at 4°C and **never freezes**, even during equipments downtime and however cold it gets outside.



Distribution basin covers

Distribution basin covers on unit tops **prevent debris collecting in unit water** distribution basins.



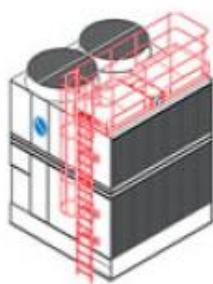
Internal walkway

An internal walkway for **easy access to the unit water basin**.



Internal service platform

An internal platform helping you **access the unit top inside** and safely inspect your cooling towers.



Ladder, safety cage and handrail

A ladder, safety cage and handrails **all facilitate access to the top of the unit** and safe inspection of your cooling tower.



Motor removal davit

For **easy removal or lifting** of the side motor.



Extended lubrication lines

Extended lubrication lines with easily accessible grease fittings can be used to **lubricate** fan shaft bearings.



Electric water level control package

For perfectly precise water level control, replace the standard mechanical valve with our electrical water level controller.



Vibration cut out switch

When excessive vibration occurs, this switch shuts down the fan, ensuring your cooling equipment **operates safely**.



Water treatment equipment

Devices to control water treatment are needed to ensure proper **cooling tower water care**. Not only does this help protect the components and fill pack, controlling corrosion, scaling and fouling, it also avoids the proliferation of harmful bacteria, including **legionella**, in the recirculating water.



Filter

Separators and media filters efficiently **remove suspended solids** in the recirculating water, reducing system cleaning costs and optimizing water treatment results. Filtration helps you keep the recirculating water clean.



Sump sweeper piping

Sump sweeper piping **prevents sediment collecting in the cold water basin** of the unit. A complete piping system, including nozzles, is installed in the basin of the tower **for connection to side stream filtration equipment**.



Clean out port

Clean out port **makes it easy to eliminate silt and sludge** from the cooling tower basin when cleaning and flushing the sump.



Remote sump connection

The best way to **prevent a sump freezing** is to use the auxiliary remote variety within a heated area. Shutting off the circulating pump allows all the water in the water distribution, as well as that in suspension and the sump to drain freely to the auxiliary sump.



Flanges

Flanges facilitate **pipng connections** on-site.

S15E 0809-06

Open cooling towers

Engineering data

REMARK: Do not use for construction. Refer to factory certified dimensions & weights. This page includes data current at time of publication, which should be reconfirmed at the time of purchase. In the interest of product improvements, specifications, weights and dimensions are subject to change without notice.

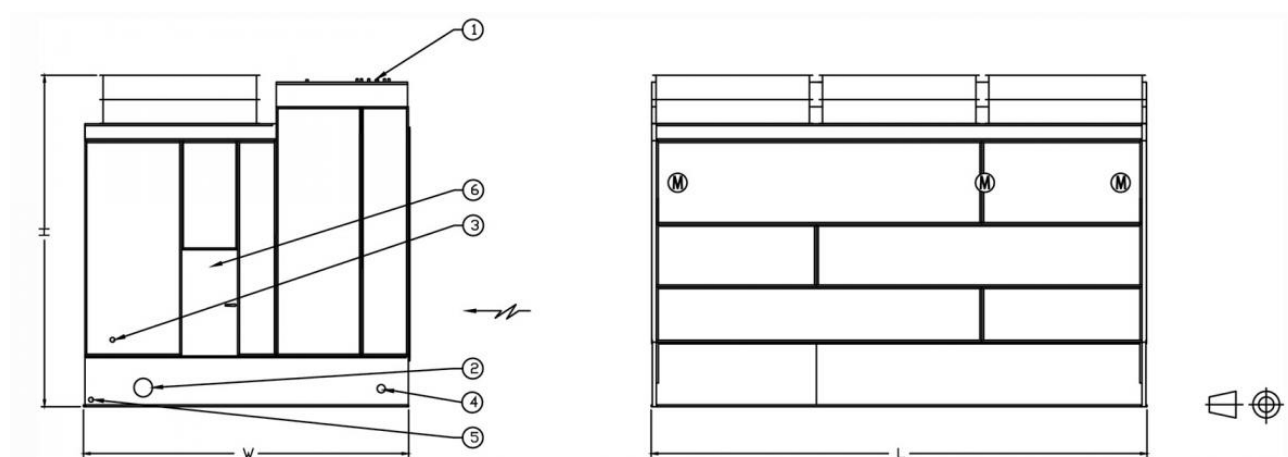
General notes

1. All connections 100 mm and smaller are MPT. Connections 125 mm and larger are beveled-for-welding.
2. Make up, overflow, suction and drain connections can be provided on end opposite to that shown; consult your BAC representative.
3. Models 1012-09 thru 1012-10, 1018-09 thru 1018-10, 1212-09 thru 1212-12 and 1218-09 thru 1218-12 are shipped in two sections per cell. The top section heights are for model 1012-09 thru 1012-10 and 1212-09 thru 1212-12, 2501 mm. For models 1018-09 thru 1018-10 and 1218-09 thru 1218-12, 2562 mm.

[S1500E cooling tower performance at standard conditions](#)

Last update 11/08/2025

S15E 0809-06



1. Water in; 2. Water out; 3. Make up; 4. Overflow ND80; 5. Drain ND50; 6. Access door.

Model	Oper. Weight (kg)	Weights (kg)		Dimensions (mm)			Air Flow (m³/s)	Fan Motor (kW)	Fluid Inlet ND (mm)	Fluid Outlet ND (mm)	Make Up ND (mm)
		Ship. Weight(kg)	Heaviest Section (kg)	L	W	H					
S15E 0809-06GE	3356	1719	1719	2737	2394	3336	17.0	(3x) 2.2	(1x) 200	(1x) 200	(1x) 40



S15E 0809-06HE	3365	1728	1728	2737	2394	3336	20.0	(3x) 4.0	(1x) 200	(1x) 200	(1x) 40
----------------	------	------	------	------	------	------	------	----------	----------	----------	---------

S15E 0812-06

Open cooling towers

Engineering data

REMARK: Do not use for construction. Refer to factory certified dimensions & weights. This page includes data current at time of publication, which should be reconfirmed at the time of purchase. In the interest of product improvements, specifications, weights and dimensions are subject to change without notice.

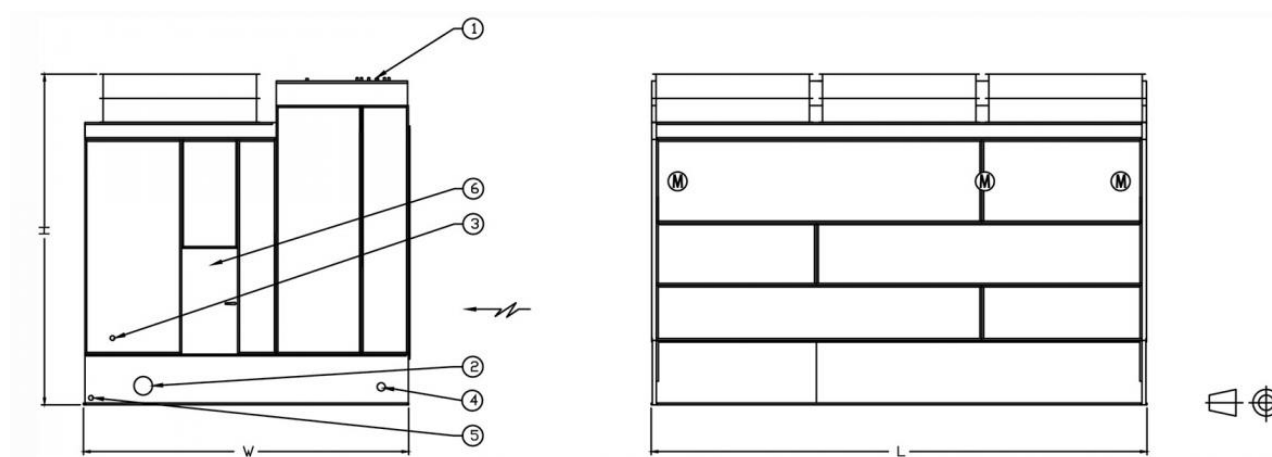
General notes

1. All connections 100 mm and smaller are MPT. Connections 125 mm and larger are beveled-for-welding.
2. Make up, overflow, suction and drain connections can be provided on end opposite to that shown; consult your BAC representative.
3. Models 1012-09 thru 1012-10, 1018-09 thru 1018-10, 1212-09 thru 1212-12 and 1218-09 thru 1218-12 are shipped in two sections per cell. The top section heights are for model 1012-09 thru 1012-10 and 1212-09 thru 1212-12, 2501 mm. For models 1018-09 thru 1018-10 and 1218-09 thru 1218-12, 2562 mm.

S1500E cooling tower performance at standard conditions

Last update 11/08/2025

S15E 0812-06



1. Water in; 2. Water out; 3. Make up; 4. Overflow ND80; 5. Drain ND50; 6. Access door.

Model	Oper. Weight (kg)	Weights (kg)		Dimensions (mm)			Air Flow (m³/s)	Fan Motor (kW)	Fluid Inlet ND (mm)	Fluid Outlet ND (mm)	Make Up ND (mm)
		Ship. Weight(kg)	Heaviest Section (kg)	L	W	H					
S15E 0812-06GE	4477	2064	2064	3651	2394	3336	19.0	(3x) 2.2	(1x) 200	(1x) 200	(1x) 40
S15E 0812-06HE	4486	2073	2073	3651	2394	3336	23.0	(3x) 4.0	(1x) 200	(1x) 200	(1x) 40
S15E 0812-06JE	4531	2118	2118	3651	2394	3336	25.0	(3x) 5.5	(1x) 200	(1x) 200	(1x) 40

S15E 1012-06

Open cooling towers

Engineering data

REMARK: Do not use for construction. Refer to factory certified dimensions & weights. This page includes data current at time of publication, which should be reconfirmed at the time of purchase. In the interest of product improvements, specifications, weights and dimensions are subject to change without notice.

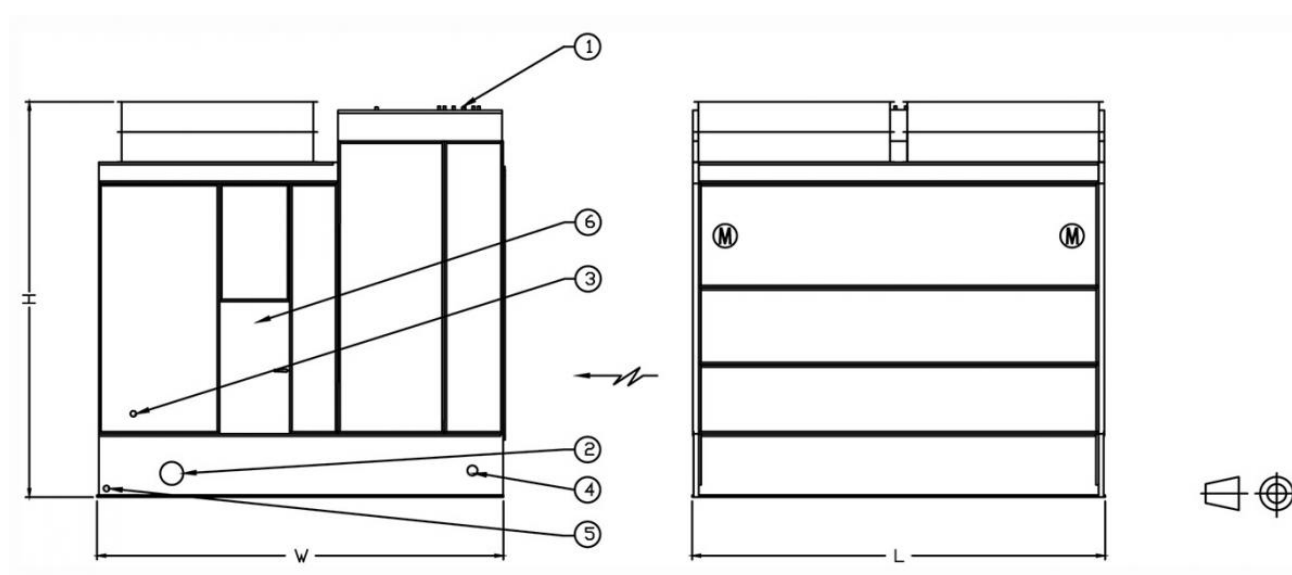
General notes

1. All connections 100 mm and smaller are MPT. Connections 125 mm and larger are beveled-for-welding.
2. Make up, overflow, suction and drain connections can be provided on end opposite to that shown; consult your BAC representative.
3. Models 1012-09 thru 1012-10, 1018-09 thru 1018-10, 1212-09 thru 1212-12 and 1218-09 thru 1218-12 are shipped in two sections per cell. The top section heights are for model 1012-09 thru 1012-10 and 1212-09 thru 1212-12, 2501 mm. For models 1018-09 thru 1018-10 and 1218-09 thru 1218-12, 2562 mm.

S1500E cooling tower performance at standard conditions

Last update 11/08/2025

S15E 1012-06



1. Water in; 2. Water out; 3. Make up; 4. Overflow ND80; 5. Drain ND50; 6. Access door.

Model	Oper. Weight (kg)	Weights (kg)		Dimensions (mm)			Air Flow (m³/s)	Fan Motor (kW)	Fluid Inlet ND (mm)	Fluid Outlet ND (mm)	Make Up ND (mm)
		Ship. Weight(kg)	Heaviest Section (kg)	L	W	H					
S15E 1012-06HE	5103	2436	2436	3651	2997	3091	24.0	(2x) 4.0	(1x) 200	(1x) 200	(1x) 40



S15E 1012-06JE	5148	2481	2481	3651	2997	3091	27.0	(2x) 5.5	(1x) 200	(1x) 200	(1x) 40
S15E 1012-06KE	5161	2494	2494	3651	2997	3091	29.0	(2x) 7.5	(1x) 200	(1x) 200	(1x) 40

S15E 1012-09 - 1012-10

Open cooling towers

Engineering data

REMARK: Do not use for construction. Refer to factory certified dimensions & weights. This page includes data current at time of publication, which should be reconfirmed at the time of purchase. In the interest of product improvements, specifications, weights and dimensions are subject to change without notice.

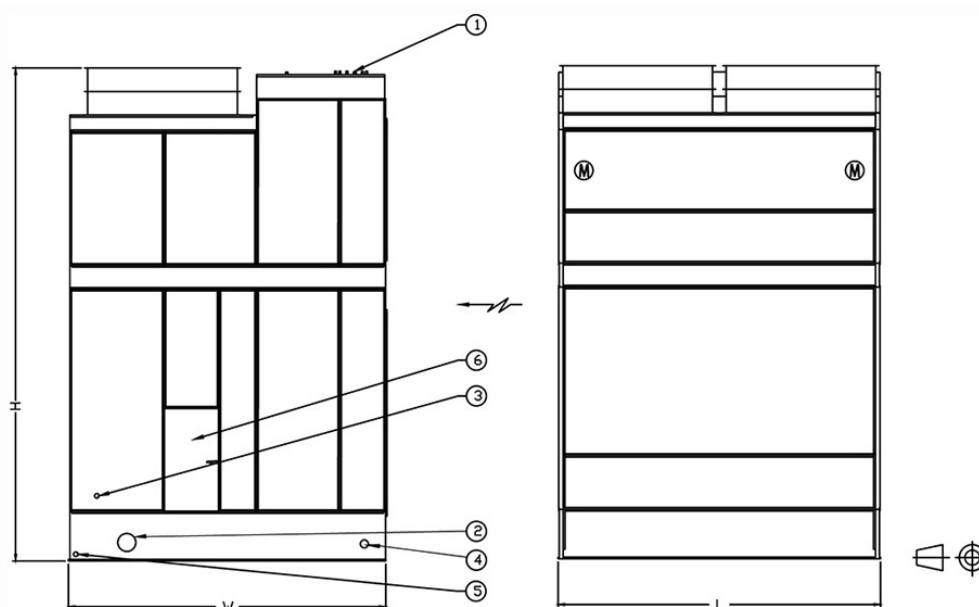
General notes

1. All connections 100 mm and smaller are MPT. Connections 125 mm and larger are beveled-for-welding.
2. Make up, overflow, suction and drain connections can be provided on end opposite to that shown; consult your BAC representative.
3. Models 1012-09 thru 1012-10, 1018-09 thru 1018-10, 1212-09 thru 1212-12 and 1218-09 thru 1218-12 are shipped in two sections per cell. The top section heights are for model 1012-09 thru 1012-10 and 1212-09 thru 1212-12, 2501 mm. For models 1018-09 thru 1018-10 and 1218-09 thru 1218-12, 2562 mm.

S1500E cooling tower performance at standard conditions

Last update 11/08/2025

S15E 1012-09 - 1012-10



1. Water in; 2. Water out; 3. Make up; 4. Overflow ND80; 5. Drain ND50; 6. Access door.

Model	Oper. Weight (kg)	Weights (kg)		Dimensions (mm)			Air Flow (m³/s)	Fan Motor (kW)	Fluid Inlet ND (mm)	Fluid Outlet ND (mm)	Make Up ND (mm)
		Ship. Weight(kg)	Heaviest Section (kg)	L	W	H					



S15E 1012-09JE	6636	3197	1914	3651	2997	4358	31.0	(2x) 5.5	(1x) 250	(1x) 250	(1x) 40
S15E 1012-09KE	6649	3210	1927	3651	2997	4358	34.0	(2x) 7.5	(1x) 250	(1x) 250	(1x) 40
S15E 1012-09LE	6705	3266	1983	3651	2997	4358	38.0	(2x) 11.0	(1x) 250	(1x) 250	(1x) 40
S15E 1012-10JE	6912	3347	1914	3651	2997	4765	32.0	(2x) 5.5	(1x) 250	(1x) 250	(1x) 40
S15E 1012-10KE	6925	3360	1927	3651	2997	4765	35.0	(2x) 7.5	(1x) 250	(1x) 250	(1x) 40
S15E 1012-10LE	6981	3416	1983	3651	2997	4765	40.0	(2x) 11.0	(1x) 250	(1x) 250	(1x) 40

S15E 1018-09 - 1018-10

Open cooling towers

Engineering data

REMARK: Do not use for construction. Refer to factory certified dimensions & weights. This page includes data current at time of publication, which should be reconfirmed at the time of purchase. In the interest of product improvements, specifications, weights and dimensions are subject to change without notice.

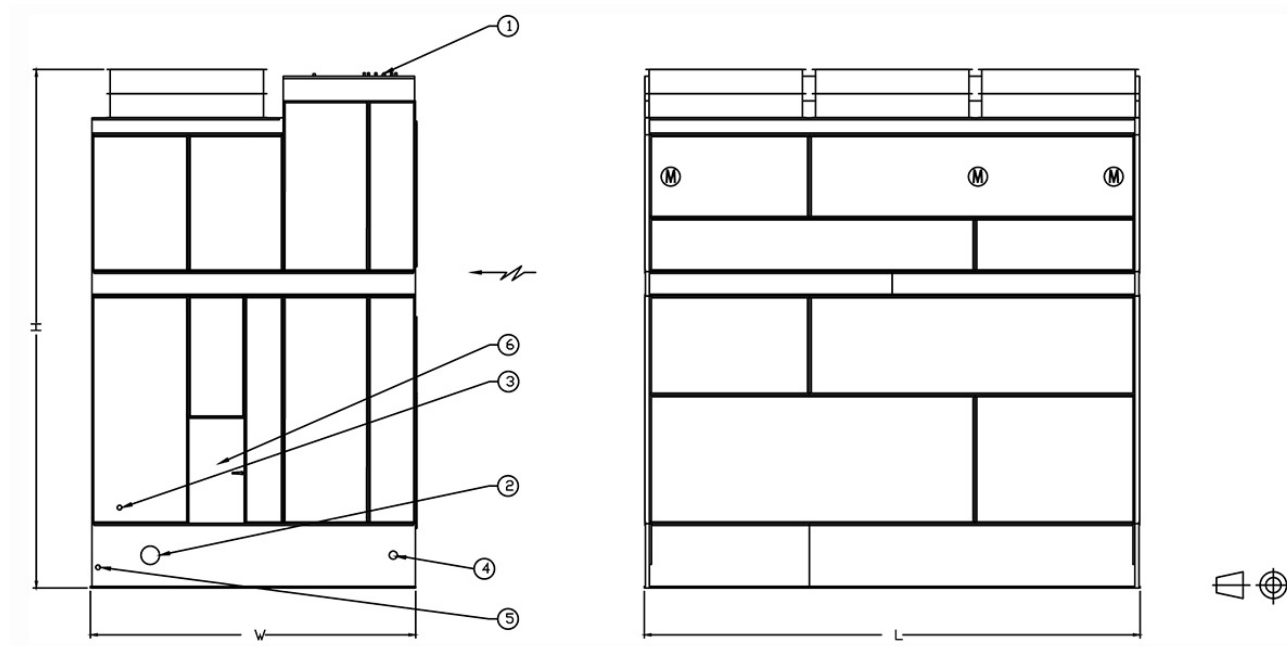
General notes

1. All connections 100 mm and smaller are MPT. Connections 125 mm and larger are beveled-for-welding.
2. Make up, overflow, suction and drain connections can be provided on end opposite to that shown; consult your BAC representative.
3. Models 1012-09 thru 1012-10, 1018-09 thru 1018-10, 1212-09 thru 1212-12 and 1218-09 thru 1218-12 are shipped in two sections per cell. The top section heights are for model 1012-09 thru 1012-10 and 1212-09 thru 1212-12, 2501 mm. For models 1018-09 thru 1018-10 and 1218-09 thru 1218-12, 2562 mm.

S1500E cooling tower performance at standard conditions

Last update 11/08/2025

S15E 1018-09 - 1018-10



1. Water in; 2. Water out; 3. Make up; 4. Overflow ND80; 5. Drain ND50; 6. Access door.

Model	Weights (kg)	Dimensions (mm)	Air Flow	Fan Motor	Fluid Inlet ND	Fluid Outlet ND	Make Up ND
-------	--------------	-----------------	----------	-----------	----------------	-----------------	------------



Oper. Weight (kg)	Ship. Weight(kg)	Heaviest Section (kg)	L	W	H						
S15E 1018-09JE	10758	4957	2925	5480	2997	4570	47.0	(3x) 5.5	(1x) 250	(1x) 300	(1x) 40
S15E 1018-09KE	10779	4978	2946	5480	2997	4570	52.0	(3x) 7.5	(1x) 250	(1x) 300	(1x) 40
S15E 1018-09LE	10947	5146	3114	5480	2997	4570	58.0	(3x) 11.0	(1x) 250	(1x) 300	(1x) 40
S15E 1018-10JE	11257	5161	2925	5480	2997	4976	48.0	(3x) 5.5	(1x) 250	(1x) 300	(1x) 40
S15E 1018-10KE	11278	5182	2946	5480	2997	4976	53.0	(3x) 7.5	(1x) 250	(1x) 300	(1x) 40
S15E 1018-10LE	11446	5350	3114	5480	2997	4976	60.0	(3x) 11.0	(1x) 250	(1x) 300	(1x) 40

S15E 1212-07

Open cooling towers

Engineering data

REMARK: Do not use for construction. Refer to factory certified dimensions & weights. This page includes data current at time of publication, which should be reconfirmed at the time of purchase. In the interest of product improvements, specifications, weights and dimensions are subject to change without notice.

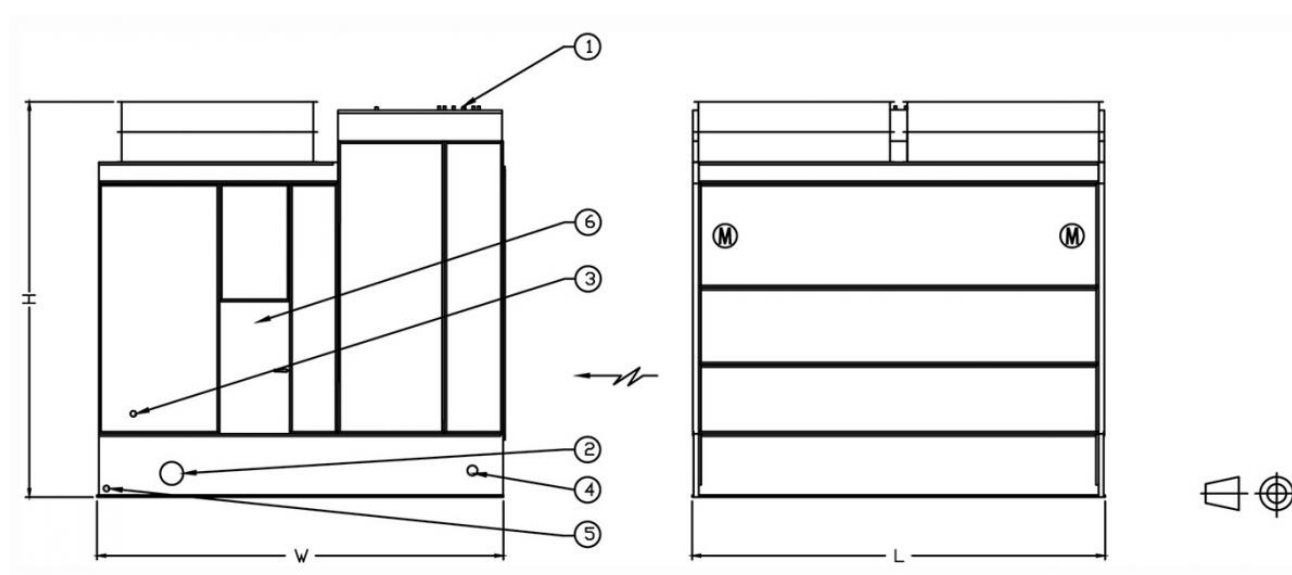
General notes

1. All connections 100 mm and smaller are MPT. Connections 125 mm and larger are beveled-for-welding.
2. Make up, overflow, suction and drain connections can be provided on end opposite to that shown; consult your BAC representative.
3. Models 1012-09 thru 1012-10, 1018-09 thru 1018-10, 1212-09 thru 1212-12 and 1218-09 thru 1218-12 are shipped in two sections per cell. The top section heights are for model 1012-09 thru 1012-10 and 1212-09 thru 1212-12, 2501 mm. For models 1018-09 thru 1018-10 and 1218-09 thru 1218-12, 2562 mm.

S1500E cooling tower performance at standard conditions

Last update 11/08/2025

S15E 1212-07



1. Water in; 2. Water out; 3. Make up; 4. Overflow ND80; 5. Drain ND50; 6. Access door.

Model	Oper. Weight (kg)	Weights (kg)		Dimensions (mm)			Air Flow (m³/s)	Fan Motor (kW)	Fluid Inlet ND (mm)	Fluid Outlet ND (mm)	Make Up ND (mm)
		Ship. Weight(kg)	Heaviest Section (kg)	L	W	H					
S15E 1212-07JE	6423	2862	2862	3651	3607	3497	31.0	(2x) 5.5	(1x) 250	(1x) 250	(1x) 40



S15E 1212-07KE	6436	2876	2876	3651	3607	3497	34.0	(2x) 7.5	(1x) 250	(1x) 250	(1x) 40
----------------	------	------	------	------	------	------	------	----------	----------	----------	---------

S15E 1212-09 - 1212-12

Open cooling towers

Engineering data

REMARK: Do not use for construction. Refer to factory certified dimensions & weights. This page includes data current at time of publication, which should be reconfirmed at the time of purchase. In the interest of product improvements, specifications, weights and dimensions are subject to change without notice.

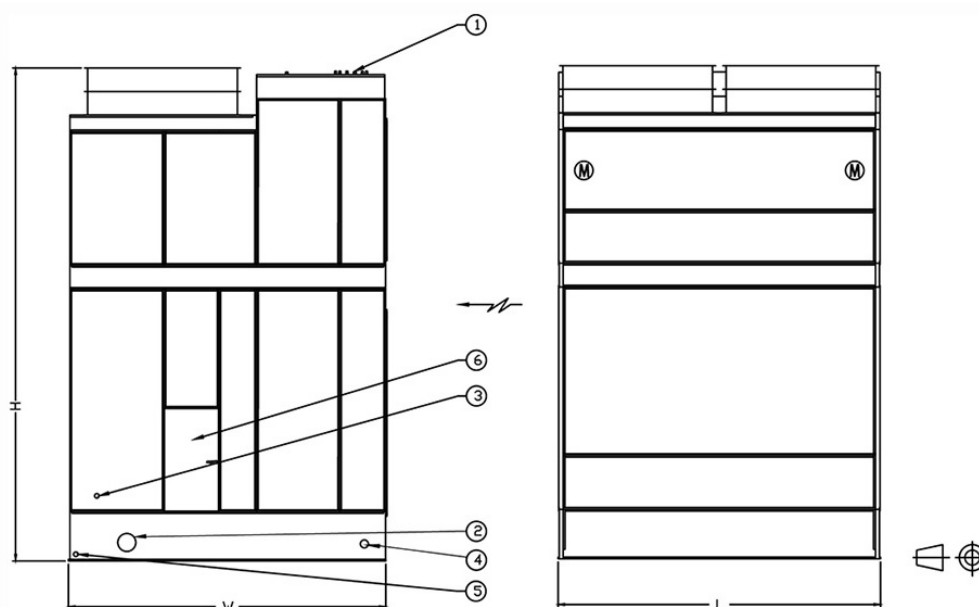
General notes

1. All connections 100 mm and smaller are MPT. Connections 125 mm and larger are beveled-for-welding.
2. Make up, overflow, suction and drain connections can be provided on end opposite to that shown; consult your BAC representative.
3. Models 1012-09 thru 1012-10, 1018-09 thru 1018-10, 1212-09 thru 1212-12 and 1218-09 thru 1218-12 are shipped in two sections per cell. The top section heights are for model 1012-09 thru 1012-10 and 1212-09 thru 1212-12, 2501 mm. For models 1018-09 thru 1018-10 and 1218-09 thru 1218-12, 2562 mm.

S1500E cooling tower performance at standard conditions

Last update 11/08/2025

S15E 1212-09 - 1212-12



1. Water in; 2. Water out; 3. Make up; 4. Overflow ND80; 5. Drain ND50; 6. Access door.

Model	Oper. Weight (kg)	Weights (kg)		Dimensions (mm)			Air Flow (m³/s)	Fan Motor (kW)	Fluid Inlet ND (mm)	Fluid Outlet ND (mm)	Make Up ND (mm)
		Ship. Weight(kg)	Heaviest Section (kg)	L	W	H					



S15E 1212-09JE	7607	3656	2109	3651	3607	4358	35.0	(2x) 5.5	(1x) 250	(1x) 250	(1x) 40
S15E 1212-09KE	7620	3670	2123	3651	3607	4358	38.0	(2x) 7.5	(1x) 250	(1x) 250	(1x) 40
S15E 1212-09LE	7734	3783	2236	3651	3607	4358	43.0	(2x) 11.0	(1x) 250	(1x) 250	(1x) 40
S15E 1212-10KE	7942	3833	2123	3651	3607	4765	40.0	(2x) 7.5	(1x) 250	(1x) 250	(1x) 40
S15E 1212-10LE	8056	3946	2236	3651	3607	4765	45.0	(2x) 11.0	(1x) 250	(1x) 250	(1x) 40
S15E 1212-10ME	8110	4001	2291	3651	3607	4765	49.0	(2x) 15.0	(1x) 250	(1x) 250	(1x) 40
S15E 1212-11KE	8337	3996	2123	3651	3607	5171	41.0	(2x) 7.5	(1x) 250	(1x) 250	(1x) 40
S15E 1212-11LE	8450	4110	2236	3651	3607	5171	46.0	(2x) 11.0	(1x) 250	(1x) 250	(1x) 40
S15E 1212-11ME	8505	4164	2291	3651	3607	5171	51.0	(2x) 15.0	(1x) 250	(1x) 250	(1x) 40
S15E 1212-12KE	8505	4164	2123	3651	3607	5577	43.0	(2x) 7.5	(1x) 250	(1x) 250	(1x) 40
S15E 1212-12LE	8618	4277	2236	3651	3607	5577	48.0	(2x) 11.0	(1x) 250	(1x) 250	(1x) 40
S15E 1212-12ME	8673	4332	2291	3651	3607	5577	52.0	(2x) 15.0	(1x) 250	(1x) 250	(1x) 40

S15E 1218-07

Open cooling towers

Engineering data

REMARK: Do not use for construction. Refer to factory certified dimensions & weights. This page includes data current at time of publication, which should be reconfirmed at the time of purchase. In the interest of product improvements, specifications, weights and dimensions are subject to change without notice.

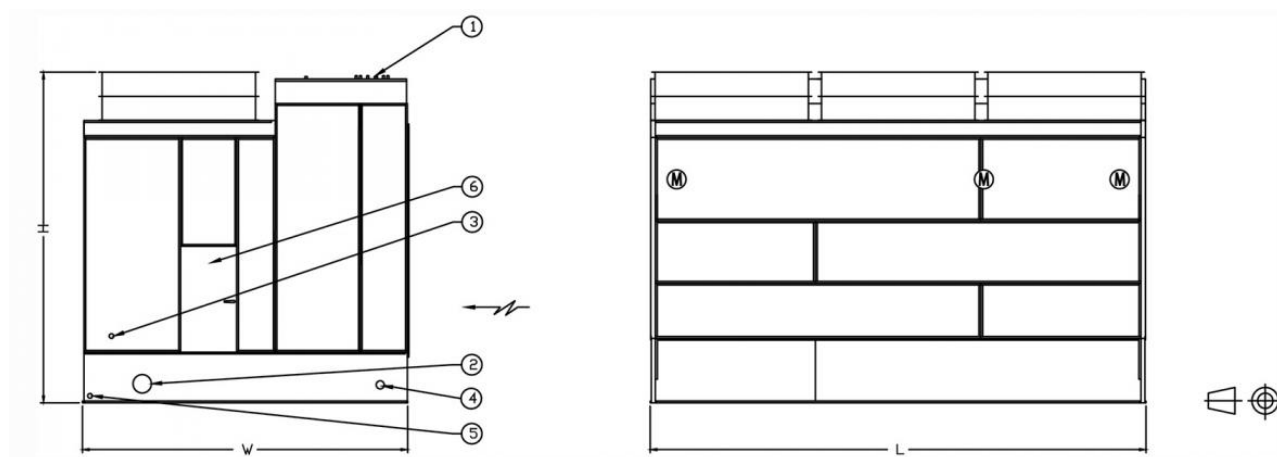
General notes

1. All connections 100 mm and smaller are MPT. Connections 125 mm and larger are beveled-for-welding.
2. Make up, overflow, suction and drain connections can be provided on end opposite to that shown; consult your BAC representative.
3. Models 1012-09 thru 1012-10, 1018-09 thru 1018-10, 1212-09 thru 1212-12 and 1218-09 thru 1218-12 are shipped in two sections per cell. The top section heights are for model 1012-09 thru 1012-10 and 1212-09 thru 1212-12, 2501 mm. For models 1018-09 thru 1018-10 and 1218-09 thru 1218-12, 2562 mm.

S1500E cooling tower performance at standard conditions

Last update 11/08/2025

S15E 1218-07



1. Water in; 2. Water out; 3. Make up; 4. Overflow ND80; 5. Drain ND50; 6. Access door.

Model	Oper. Weight (kg)	Weights (kg)		Dimensions (mm)			Air Flow (m³/s)	Fan Motor (kW)	Fluid Inlet ND (mm)	Fluid Outlet ND (mm)	Make Up ND (mm)
		Ship. Weight(kg)	Heaviest Section (kg)	L	W	H					
S15E 1218-07JE	10646	4391	4391	5480	3607	3715	47.0	(3x) 5.5	(1x) 250	(1x) 300	(1x) 40
S15E 1218-07KE	10664	4409	4409	5480	3607	3715	51.0	(3x) 7.5	(1x) 250	(1x) 300	(1x) 40

S15E 1218-09 - 1218-12

Open cooling towers

Engineering data

REMARK: Do not use for construction. Refer to factory certified dimensions & weights. This page includes data current at time of publication, which should be reconfirmed at the time of purchase. In the interest of product improvements, specifications, weights and dimensions are subject to change without notice.

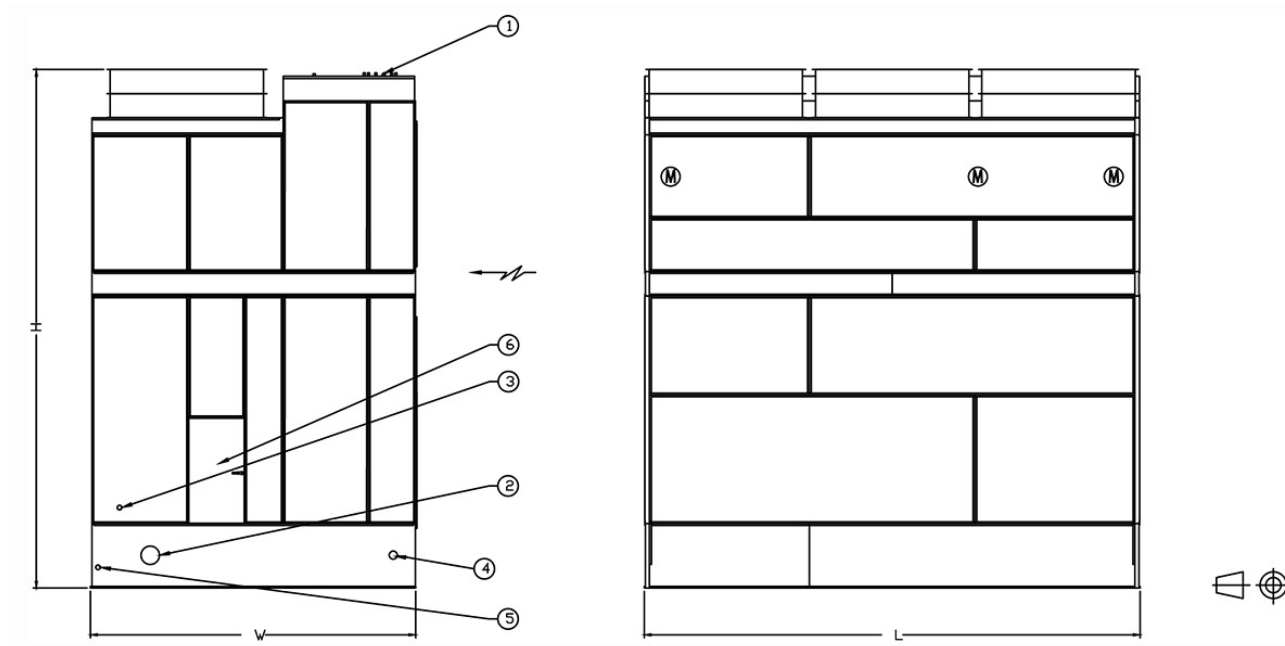
General notes

1. All connections 100 mm and smaller are MPT. Connections 125 mm and larger are beveled-for-welding.
2. Make up, overflow, suction and drain connections can be provided on end opposite to that shown; consult your BAC representative.
3. Models 1012-09 thru 1012-10, 1018-09 thru 1018-10, 1212-09 thru 1212-12 and 1218-09 thru 1218-12 are shipped in two sections per cell. The top section heights are for model 1012-09 thru 1012-10 and 1212-09 thru 1212-12, 2501 mm. For models 1018-09 thru 1018-10 and 1218-09 thru 1218-12, 2562 mm.

S1500E cooling tower performance at standard conditions

Last update 11/08/2025

S15E 1218-09 - 1218-12



1. Water in; 2. Water out; 3. Make up; 4. Overflow ND80; 5. Drain ND50; 6. Access door.

Model	Weights (kg)	Dimensions (mm)	Air Flow	Fan Motor	Fluid Inlet ND	Fluid Outlet	Make Up ND
-------	--------------	-----------------	----------	-----------	----------------	--------------	------------



Oper. Weight (kg)	Ship. Weight(kg)	Heaviest Section (kg)	L	W	H						
S15E 1218-09JE	12347	5502	3162	5480	3607	4570	52.0	(3x) 5.5	(1x) 250	(1x) 300	(1x) 40
S15E 1218-09KE	12365	5520	3180	5480	3607	4570	58.0	(3x) 7.5	(1x) 250	(1x) 300	(1x) 40
S15E 1218-09LE	12537	5693	3352	5480	3607	4570	65.0	(3x) 11.0	(1x) 250	(1x) 300	(1x) 40
S15E 1218-10KE	12955	5752	3180	5480	3607	4976	60.0	(3x) 7.5	(1x) 250	(1x) 300	(1x) 40
S15E 1218-10LE	13127	5924	3352	5480	3607	4976	67.0	(3x) 11.0	(1x) 250	(1x) 300	(1x) 40
S15E 1218-10ME	13209	6006	3434	5480	3607	4976	74.0	(3x) 15.0	(1x) 250	(1x) 300	(1x) 40
S15E 1218-11KE	13308	5987	3180	5480	3607	5382	62.0	(3x) 7.5	(1x) 250	(1x) 300	(1x) 40
S15E 1218-11LE	13481	6160	3352	5480	3607	5382	70.0	(3x) 11.0	(1x) 250	(1x) 300	(1x) 40
S15E 1218-11ME	13562	6241	3434	5480	3607	5382	77.0	(3x) 15.0	(1x) 250	(1x) 300	(1x) 40
S15E 1218-12KE	13785	6228	3180	5480	3607	5789	64.0	(3x) 7.5	(1x) 250	(1x) 300	(1x) 40
S15E 1218-12LE	13957	6400	3352	5480	3607	5789	72.0	(3x) 11.0	(1x) 250	(1x) 300	(1x) 40
S15E 1218-12ME	14039	6482	3434	5480	3607	5789	79.0	(3x) 15.0	(1x) 250	(1x) 300	(1x) 40

XES15E 0809-06

Open cooling towers

Engineering data

REMARK: Do not use for construction. Refer to factory certified dimensions & weights. This page includes data current at time of publication, which should be reconfirmed at the time of purchase. In the interest of product improvements, specifications, weights and dimensions are subject to change without notice.

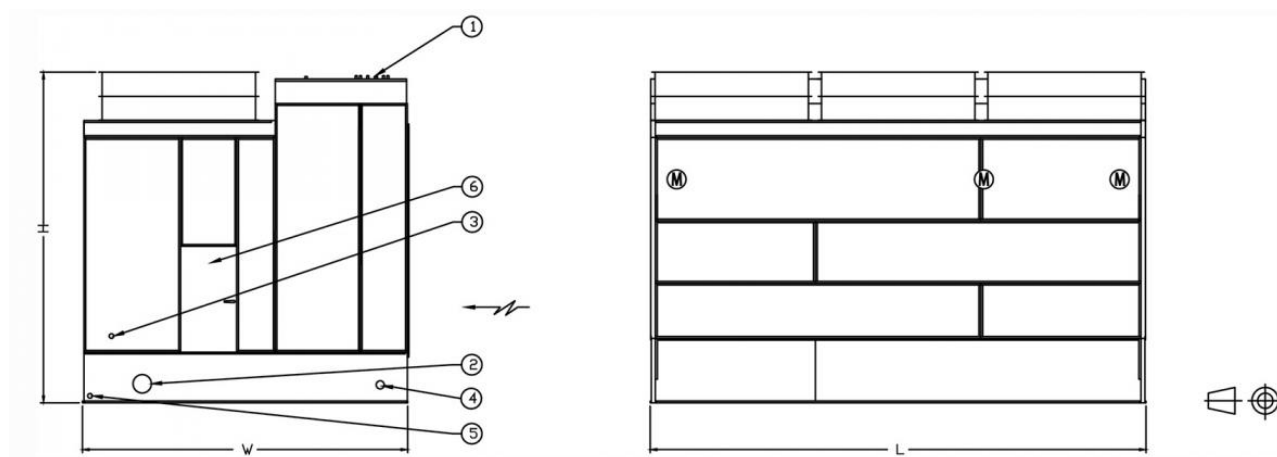
General notes

1. All connections 100 mm and smaller are MPT. Connections 125 mm and larger are beveled-for-welding.
2. Make up, overflow, suction and drain connections can be provided on end opposite to that shown; consult your BAC representative.
3. Models 1012-09 thru 1012-10, 1018-09 thru 1018-10, 1212-09 thru 1212-12 and 1218-09 thru 1218-12 are shipped in two sections per cell. The top section heights are for model 1012-09 thru 1012-10 and 1212-09 thru 1212-12, 2501 mm. For models 1018-09 thru 1018-10 and 1218-09 thru 1218-12, 2562 mm.

S1500E cooling tower performance at standard conditions

Last update 11/08/2025

XES15E 0809-06



1. Water in; 2. Water out; 3. Make up; 4. Overflow ND80; 5. Drain ND50; 6. Access door.

Model	Oper. Weight (kg)	Weights (kg)		Dimensions (mm)			Air Flow (m³/s)	Fan Motor (kW)	Fluid Inlet ND (mm)	Fluid Outlet ND (mm)	Make Up ND (mm)
		Ship. Weight(kg)	Heaviest Section (kg)	L	W	H					
XES15E 0809-06DE	3302	1665	1665	2737	2394	3336	12.0	(3x) 0.75	(1x) 200	(1x) 200	(1x) 40
XES15E 0809-06EE	3302	1665	1665	2737	2394	3336	14.0	(3x) 1.1	(1x) 200	(1x) 200	(1x) 40
XES15E 0809-06FE	3329	1692	1692	2737	2394	3336	15.0	(3x) 1.5	(1x) 200	(1x) 200	(1x) 40

XES15E 0812-06

Open cooling towers

Engineering data

REMARK: Do not use for construction. Refer to factory certified dimensions & weights. This page includes data current at time of publication, which should be reconfirmed at the time of purchase. In the interest of product improvements, specifications, weights and dimensions are subject to change without notice.

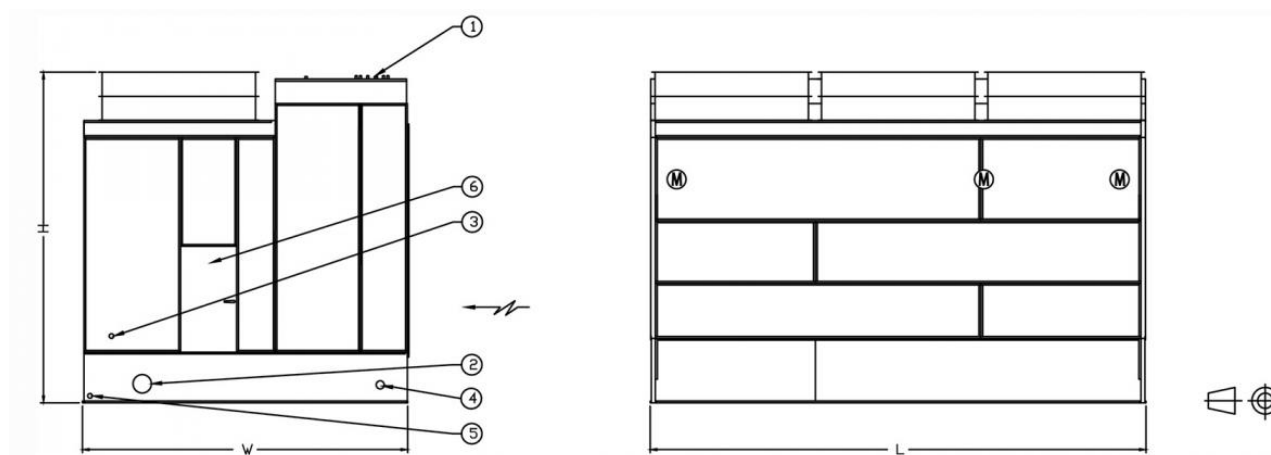
General notes

1. All connections 100 mm and smaller are MPT. Connections 125 mm and larger are beveled-for-welding.
2. Make up, overflow, suction and drain connections can be provided on end opposite to that shown; consult your BAC representative.
3. Models 1012-09 thru 1012-10, 1018-09 thru 1018-10, 1212-09 thru 1212-12 and 1218-09 thru 1218-12 are shipped in two sections per cell. The top section heights are for model 1012-09 thru 1012-10 and 1212-09 thru 1212-12, 2501 mm. For models 1018-09 thru 1018-10 and 1218-09 thru 1218-12, 2562 mm.

S1500E cooling tower performance at standard conditions

Last update 11/08/2025

XES15E 0812-06



1. Water in; 2. Water out; 3. Make up; 4. Overflow ND80; 5. Drain ND50; 6. Access door.

Model	Oper. Weight (kg)	Weights (kg)		Dimensions (mm)			Air Flow (m³/s)	Fan Motor (kW)	Fluid Inlet ND (mm)	Fluid Outlet ND (mm)	Make Up ND (mm)
		Ship. Weight(kg)	Heaviest Section (kg)	L	W	H					
XES15E 0812-06DE	4423	2009	2009	3651	2394	3336	13.0	(3x) 0.75	(1x) 200	(1x) 200	(1x) 40
XES15E 0812-06EE	4423	2009	2009	3651	2394	3336	15.0	(3x) 1.1	(1x) 200	(1x) 200	(1x) 40
XES15E 0812-06FE	4450	2037	2037	3651	2394	3336	17.0	(3x) 1.5	(1x) 200	(1x) 200	(1x) 40

XES15E 1012-06

Open cooling towers

Engineering data

REMARK: Do not use for construction. Refer to factory certified dimensions & weights. This page includes data current at time of publication, which should be reconfirmed at the time of purchase. In the interest of product improvements, specifications, weights and dimensions are subject to change without notice.

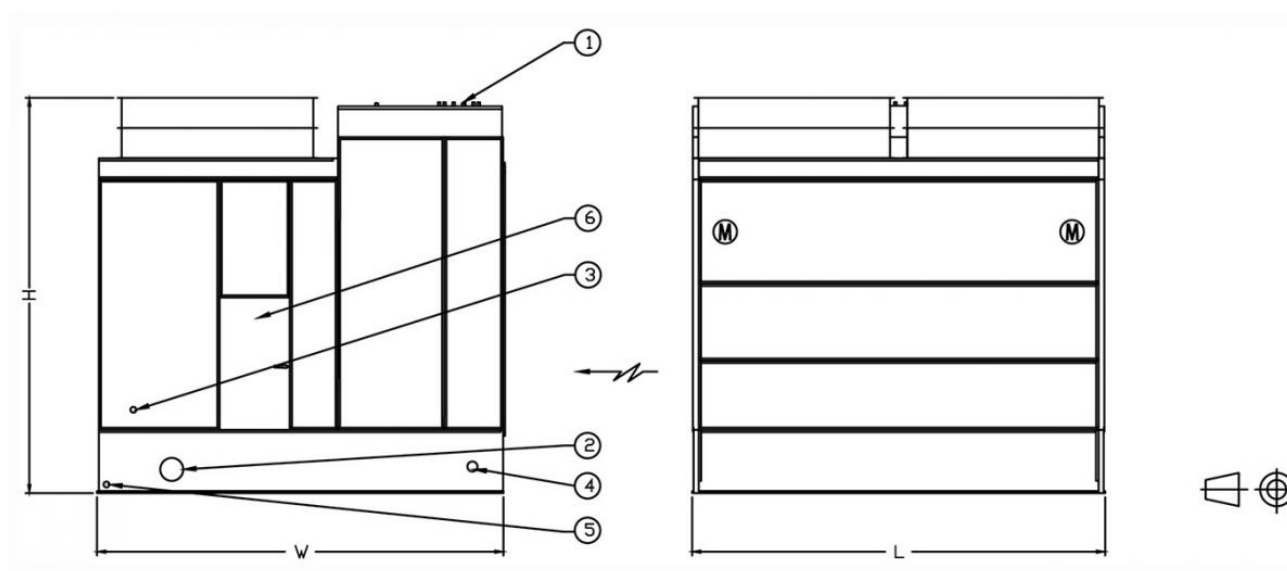
General notes

1. All connections 100 mm and smaller are MPT. Connections 125 mm and larger are beveled-for-welding.
2. Make up, overflow, suction and drain connections can be provided on end opposite to that shown; consult your BAC representative.
3. Models 1012-09 thru 1012-10, 1018-09 thru 1018-10, 1212-09 thru 1212-12 and 1218-09 thru 1218-12 are shipped in two sections per cell. The top section heights are for model 1012-09 thru 1012-10 and 1212-09 thru 1212-12, 2501 mm. For models 1018-09 thru 1018-10 and 1218-09 thru 1218-12, 2562 mm.

S1500E cooling tower performance at standard conditions

Last update 11/08/2025

XES15E 1012-06



1. Water in; 2. Water out; 3. Make up; 4. Overflow ND80; 5. Drain ND50; 6. Access door.

Model	Oper. Weight (kg)	Weights (kg)		Dimensions (mm)			Air Flow (m³/s)	Fan Motor (kW)	Fluid Inlet ND (mm)	Fluid Outlet ND (mm)	Make Up ND (mm)
		Ship. Weight(kg)	Heaviest Section (kg)	L	W	H					
XES15E 1012-06EE	5048	2381	2381	3651	2997	3091	16.0	(2x) 1.1	(1x) 200	(1x) 200	(1x) 40



XES15E 1012-06FE	5067	2400	2400	3651	2997	3091	18.0	(2x) 1.5	(1x) 200	(1x) 200	(1x) 40
XES15E 1012-06GE	5094	2427	2427	3651	2997	3091	20.0	(2x) 2.2	(1x) 200	(1x) 200	(1x) 40

XES15E 1012-09 - 1012-10

Open cooling towers

Engineering data

REMARK: Do not use for construction. Refer to factory certified dimensions & weights. This page includes data current at time of publication, which should be reconfirmed at the time of purchase. In the interest of product improvements, specifications, weights and dimensions are subject to change without notice.

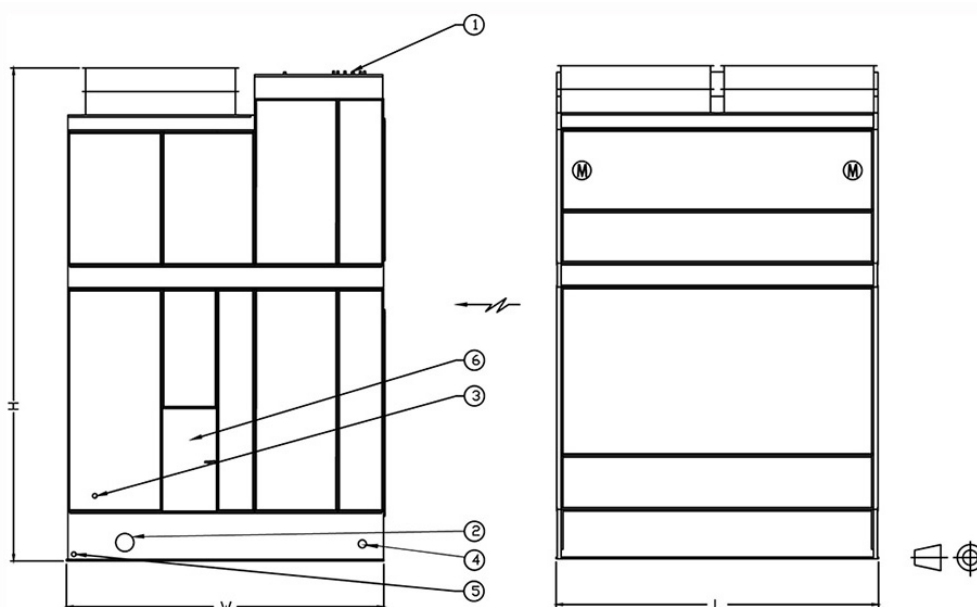
General notes

1. All connections 100 mm and smaller are MPT. Connections 125 mm and larger are beveled-for-welding.
2. Make up, overflow, suction and drain connections can be provided on end opposite to that shown; consult your BAC representative.
3. Models 1012-09 thru 1012-10, 1018-09 thru 1018-10, 1212-09 thru 1212-12 and 1218-09 thru 1218-12 are shipped in two sections per cell. The top section heights are for model 1012-09 thru 1012-10 and 1212-09 thru 1212-12, 2501 mm. For models 1018-09 thru 1018-10 and 1218-09 thru 1218-12, 2562 mm.

S1500E cooling tower performance at standard conditions

Last update 11/08/2025

XES15E 1012-09 - 1012-10



1. Water in; 2. Water out; 3. Make up; 4. Overflow ND80; 5. Drain ND50; 6. Access door.

Model	Oper. Weight (kg)	Weights (kg)		Dimensions (mm)			Air Flow (m³/s)	Fan Motor (kW)	Fluid Inlet ND (mm)	Fluid Outlet ND (mm)	Make Up ND (mm)
		Ship. Weight(kg)	Heaviest Section (kg)	L	W	H					



XES15E 1012-09EE	6536	3098	1814	3651	2997	4358	19.0	(2x) 1.1	(1x) 250	(1x) 250	(1x) 40
XES15E 1012-09FE	6554	3116	1833	3651	2997	4358	20.0	(2x) 1.5	(1x) 250	(1x) 250	(1x) 40
XES15E 1012-09GE	6582	3143	1860	3651	2997	4358	23.0	(2x) 2.2	(1x) 250	(1x) 250	(1x) 40
XES15E 1012-09HE	6591	3152	1869	3651	2997	4358	28.0	(2x) 4.0	(1x) 250	(1x) 250	(1x) 40
XES15E 1012-10EE	6813	3248	1814	3651	2997	4765	19.0	(2x) 1.1	(1x) 250	(1x) 250	(1x) 40
XES15E 1012-10FE	6831	3266	1833	3651	2997	4765	21.0	(2x) 1.5	(1x) 250	(1x) 250	(1x) 40
XES15E 1012-10GE	6858	3293	1860	3651	2997	4765	24.0	(2x) 2.2	(1x) 250	(1x) 250	(1x) 40
XES15E 1012-10HE	6867	3302	1869	3651	2997	4765	29.0	(2x) 4.0	(1x) 250	(1x) 250	(1x) 40

XES15E 1018-09 - 1018-10

Open cooling towers

Engineering data

REMARK: Do not use for construction. Refer to factory certified dimensions & weights. This page includes data current at time of publication, which should be reconfirmed at the time of purchase. In the interest of product improvements, specifications, weights and dimensions are subject to change without notice.

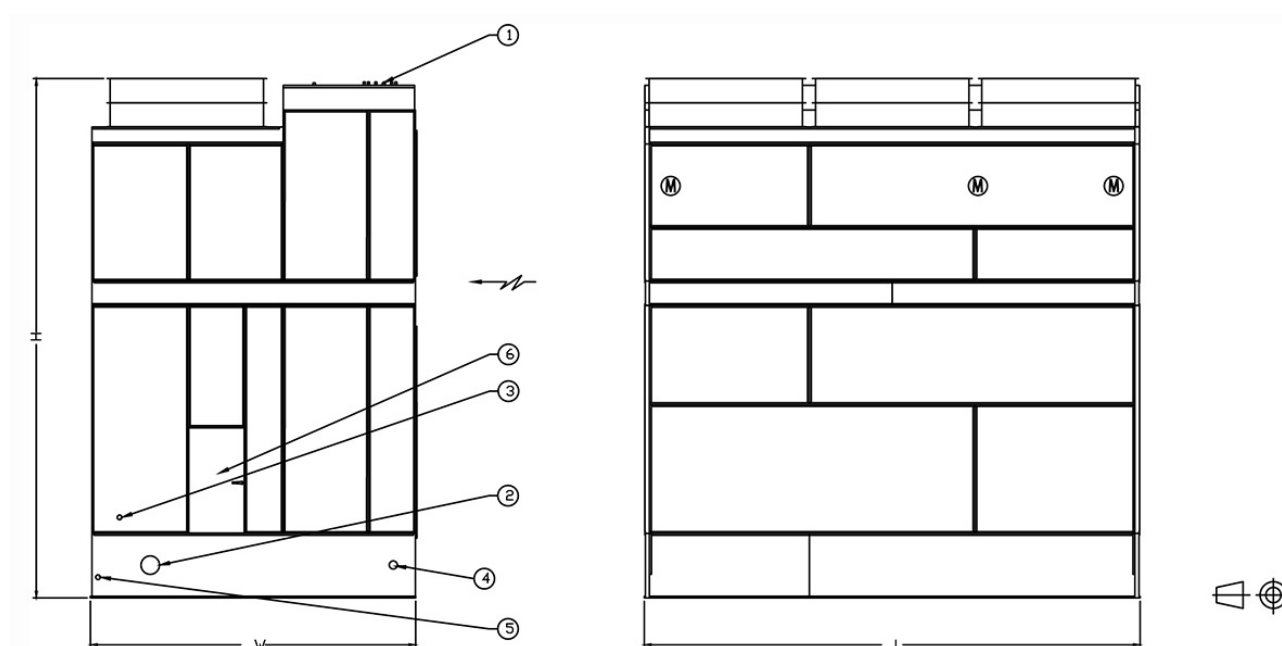
General notes

1. All connections 100 mm and smaller are MPT. Connections 125 mm and larger are beveled-for-welding.
2. Make up, overflow, suction and drain connections can be provided on end opposite to that shown; consult your BAC representative.
3. Models 1012-09 thru 1012-10, 1018-09 thru 1018-10, 1212-09 thru 1212-12 and 1218-09 thru 1218-12 are shipped in two sections per cell. The top section heights are for model 1012-09 thru 1012-10 and 1212-09 thru 1212-12, 2501 mm. For models 1018-09 thru 1018-10 and 1218-09 thru 1218-12, 2562 mm.

[S1500E cooling tower performance at standard conditions](#)

Last update 11/08/2025

XES15E 1018-09 - 1018-10



1. Water in; 2. Water out; 3. Make up; 4. Overflow ND80; 5. Drain ND50; 6. Access door.

Model	Weights (kg)	Dimensions (mm)	Air Flow	Fan Motor	Fluid Inlet	Fluid Outlet	Make Up ND
-------	--------------	-----------------	----------	-----------	-------------	--------------	------------



Oper. Weight (kg)	Ship. Weight(kg)	Heaviest Section (kg)	L	W	H						
XES15E 1018-09EE	10610	4808	2776	5480	2997	4570	28.0	(3x) 1.1	(1x) 250	(1x) 300	(1x) 40
XES15E 1018-09FE	10637	4835	2803	5480	2997	4570	31.0	(3x) 1.5	(1x) 250	(1x) 300	(1x) 40
XES15E 1018-09GE	10678	4876	2844	5480	2997	4570	35.0	(3x) 2.2	(1x) 250	(1x) 300	(1x) 40
XES15E 1018-09HE	10691	4890	2858	5480	2997	4570	42.0	(3x) 4.0	(1x) 250	(1x) 300	(1x) 40
XES15E 1018-10EE	11108	5012	2776	5480	2997	4976	29.0	(3x) 1.1	(1x) 250	(1x) 300	(1x) 40
XES15E 1018-10FE	11136	5039	2803	5480	2997	4976	32.0	(3x) 1.5	(1x) 250	(1x) 300	(1x) 40
XES15E 1018-10GE	11177	5080	2844	5480	2997	4976	36.0	(3x) 2.2	(1x) 250	(1x) 300	(1x) 40
XES15E 1018-10HE	11190	5094	2858	5480	2997	4976	44.0	(3x) 4.0	(1x) 250	(1x) 300	(1x) 40

XES15E 1212-07

Open cooling towers

Engineering data

REMARK: Do not use for construction. Refer to factory certified dimensions & weights. This page includes data current at time of publication, which should be reconfirmed at the time of purchase. In the interest of product improvements, specifications, weights and dimensions are subject to change without notice.

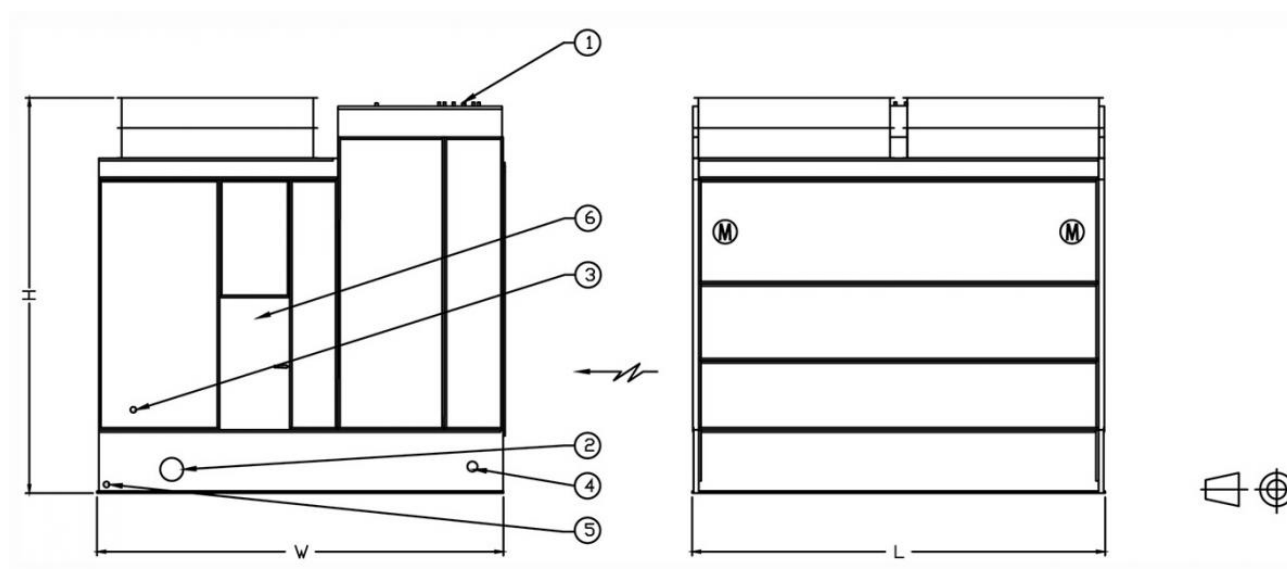
General notes

1. All connections 100 mm and smaller are MPT. Connections 125 mm and larger are beveled-for-welding.
2. Make up, overflow, suction and drain connections can be provided on end opposite to that shown; consult your BAC representative.
3. Models 1012-09 thru 1012-10, 1018-09 thru 1018-10, 1212-09 thru 1212-12 and 1218-09 thru 1218-12 are shipped in two sections per cell. The top section heights are for model 1012-09 thru 1012-10 and 1212-09 thru 1212-12, 2501 mm. For models 1018-09 thru 1018-10 and 1218-09 thru 1218-12, 2562 mm.

S1500E cooling tower performance at standard conditions

Last update 11/08/2025

XES15E 1212-07



1. Water in; 2. Water out; 3. Make up; 4. Overflow ND80; 5. Drain ND50; 6. Access door.

Model	Oper. Weight (kg)	Weights (kg)		Dimensions (mm)			Air Flow (m³/s)	Fan Motor (kW)	Fluid Inlet ND (mm)	Fluid Outlet ND (mm)	Make Up ND (mm)
		Ship. Weight(kg)	Heaviest Section (kg)	L	W	H					
XES15E 1212-07EE	6323	2762	2762	3651	3607	3497	19.0	(2x) 1.1	(1x) 250	(1x) 250	(1x) 40



XES15E 1212-07FE	6341	2781	2781	3651	3607	3497	21.0	(2x) 1.5	(1x) 250	(1x) 250	(1x) 40
XES15E 1212-07GE	6368	2808	2808	3651	3607	3497	23.0	(2x) 2.2	(1x) 250	(1x) 250	(1x) 40
XES15E 1212-07HE	6378	2817	2817	3651	3607	3497	28.0	(2x) 4.0	(1x) 250	(1x) 250	(1x) 40

XES15E 1212-09 - 1212-12

Open cooling towers

Engineering data

REMARK: Do not use for construction. Refer to factory certified dimensions & weights. This page includes data current at time of publication, which should be reconfirmed at the time of purchase. In the interest of product improvements, specifications, weights and dimensions are subject to change without notice.

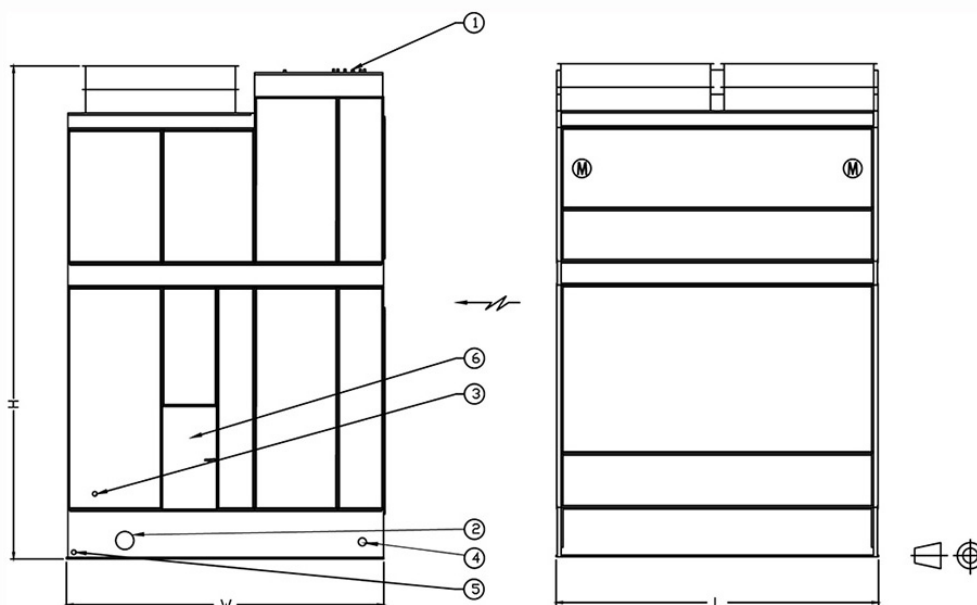
General notes

1. All connections 100 mm and smaller are MPT. Connections 125 mm and larger are beveled-for-welding.
2. Make up, overflow, suction and drain connections can be provided on end opposite to that shown; consult your BAC representative.
3. Models 1012-09 thru 1012-10, 1018-09 thru 1018-10, 1212-09 thru 1212-12 and 1218-09 thru 1218-12 are shipped in two sections per cell. The top section heights are for model 1012-09 thru 1012-10 and 1212-09 thru 1212-12, 2501 mm. For models 1018-09 thru 1018-10 and 1218-09 thru 1218-12, 2562 mm.

S1500E cooling tower performance at standard conditions

Last update 11/08/2025

XES15E 1212-09 - 1212-12



1. Water in; 2. Water out; 3. Make up; 4. Overflow ND80; 5. Drain ND50; 6. Access door.

Model	Weights (kg)	Dimensions (mm)	Air Flow	Fan Motor	Fluid Inlet	Fluid Outlet	Make Up ND
-------	--------------	-----------------	----------	-----------	-------------	--------------	------------



Oper. Weight (kg)	Ship. Weight(kg)	Heaviest Section (kg)	L	W	H						
XES15E 1212-09EE	7507	3556	2009	3651	3607	4358	21.0	(2x) 1.1	(1x) 250	(1x) 250	(1x) 40
XES15E 1212-09FE	7525	3574	2028	3651	3607	4358	23.0	(2x) 1.5	(1x) 250	(1x) 250	(1x) 40
XES15E 1212-09GE	7552	3602	2055	3651	3607	4358	26.0	(2x) 2.2	(1x) 250	(1x) 250	(1x) 40
XES15E 1212-09HE	7561	3611	2064	3651	3607	4358	32.0	(2x) 4.0	(1x) 250	(1x) 250	(1x) 40
XES15E 1212-10EE	7829	3719	2009	3651	3607	4765	22.0	(2x) 1.1	(1x) 250	(1x) 250	(1x) 40
XES15E 1212-10FE	7847	3738	2028	3651	3607	4765	24.0	(2x) 1.5	(1x) 250	(1x) 250	(1x) 40
XES15E 1212-10GE	7874	3765	2055	3651	3607	4765	27.0	(2x) 2.2	(1x) 250	(1x) 250	(1x) 40
XES15E 1212-10HE	7883	3774	2064	3651	3607	4765	33.0	(2x) 4.0	(1x) 250	(1x) 250	(1x) 40
XES15E 1212-10JE	7929	3819	2109	3651	3607	4765	36.0	(2x) 5.5	(1x) 250	(1x) 250	(1x) 40
XES15E 1212-11EE	8224	3883	2009	3651	3607	5171	23.0	(2x) 1.1	(1x) 250	(1x) 250	(1x) 40
XES15E 1212-11FE	8242	3901	2028	3651	3607	5171	25.0	(2x) 1.5	(1x) 250	(1x) 250	(1x) 40
XES15E 1212-11GE	8269	3928	2055	3651	3607	5171	28.0	(2x) 2.2	(1x) 250	(1x) 250	(1x) 40
XES15E 1212-11HE	8278	3937	2064	3651	3607	5171	34.0	(2x) 4.0	(1x) 250	(1x) 250	(1x) 40
XES15E 1212-11JE	8323	3983	2109	3651	3607	5171	38.0	(2x) 5.5	(1x) 250	(1x) 250	(1x) 40
XES15E 1212-12EE	8391	4051	2041	3651	3607	5577	24.0	(2x) 1.1	(1x) 250	(1x) 250	(1x) 40
XES15E 1212-12FE	8410	4069	2041	3651	3607	5577	26.0	(2x) 1.5	(1x) 250	(1x) 250	(1x) 40
XES15E 1212-12GE	8437	4096	2055	3651	3607	5577	29.0	(2x) 2.2	(1x) 250	(1x) 250	(1x) 40
XES15E 1212-12HE	8446	4105	2064	3651	3607	5577	35.0	(2x) 4.0	(1x) 250	(1x) 250	(1x) 40
XES15E 1212-12JE	8491	4150	2109	3651	3607	5577	39.0	(2x) 5.5	(1x) 250	(1x) 250	(1x) 40

XES15E 1218-07

Open cooling towers

Engineering data

REMARK: Do not use for construction. Refer to factory certified dimensions & weights. This page includes data current at time of publication, which should be reconfirmed at the time of purchase. In the interest of product improvements, specifications, weights and dimensions are subject to change without notice.

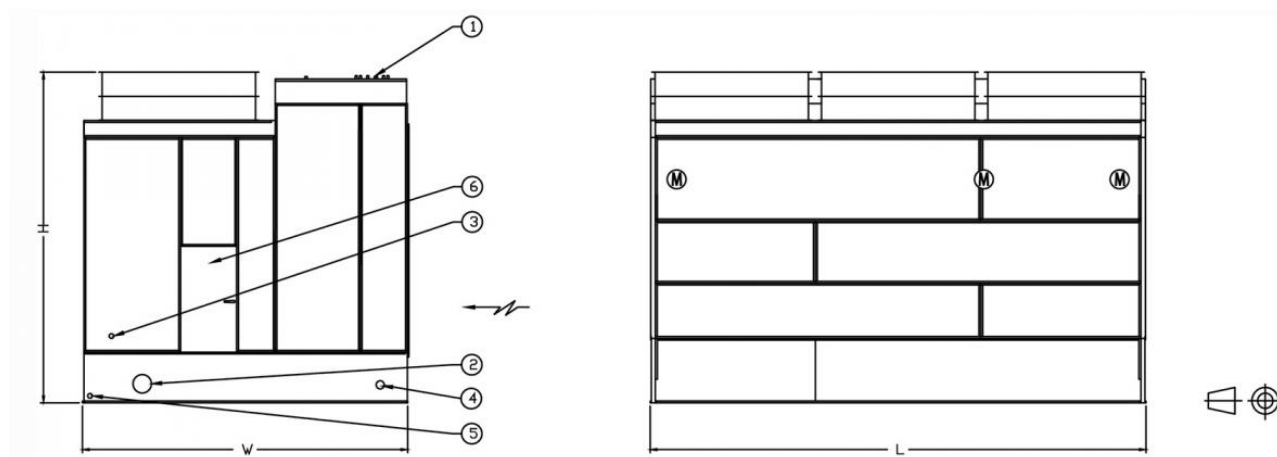
General notes

1. All connections 100 mm and smaller are MPT. Connections 125 mm and larger are beveled-for-welding.
2. Make up, overflow, suction and drain connections can be provided on end opposite to that shown; consult your BAC representative.
3. Models 1012-09 thru 1012-10, 1018-09 thru 1018-10, 1212-09 thru 1212-12 and 1218-09 thru 1218-12 are shipped in two sections per cell. The top section heights are for model 1012-09 thru 1012-10 and 1212-09 thru 1212-12, 2501 mm. For models 1018-09 thru 1018-10 and 1218-09 thru 1218-12, 2562 mm.

S1500E cooling tower performance at standard conditions

Last update 11/08/2025

XES15E 1218-07



1. Water in; 2. Water out; 3. Make up; 4. Overflow ND80; 5. Drain ND50; 6. Access door.

Model	Oper. Weight (kg)	Weights (kg)		Dimensions (mm)			Air Flow (m³/s)	Fan Motor (kW)	Fluid Inlet ND (mm)	Fluid Outlet ND (mm)	Make Up ND (mm)
		Ship. Weight(kg)	Heaviest Section (kg)	L	W	H					
XES15E 1218-07EE	10496	4241	4241	5480	3607	3715	28.0	(3x) 1.1	(1x) 250	(1x) 300	(1x) 40
XES15E 1218-07FE	10523	4268	4268	5480	3607	3715	31.0	(3x) 1.5	(1x) 250	(1x) 300	(1x) 40
XES15E 1218-07GE	10564	4309	4309	5480	3607	3715	35.0	(3x) 2.2	(1x) 250	(1x) 300	(1x) 40



XES15E 1218-07HE	10578	4323	4323	5480	3607	3715	42.0	(3x) 4.0	(1x) 250	(1x) 300	(1x) 40
------------------	-------	------	------	------	------	------	------	----------	----------	----------	---------

XES15E 1218-09 - 1218-12

Open cooling towers

Engineering data

REMARK: Do not use for construction. Refer to factory certified dimensions & weights. This page includes data current at time of publication, which should be reconfirmed at the time of purchase. In the interest of product improvements, specifications, weights and dimensions are subject to change without notice.

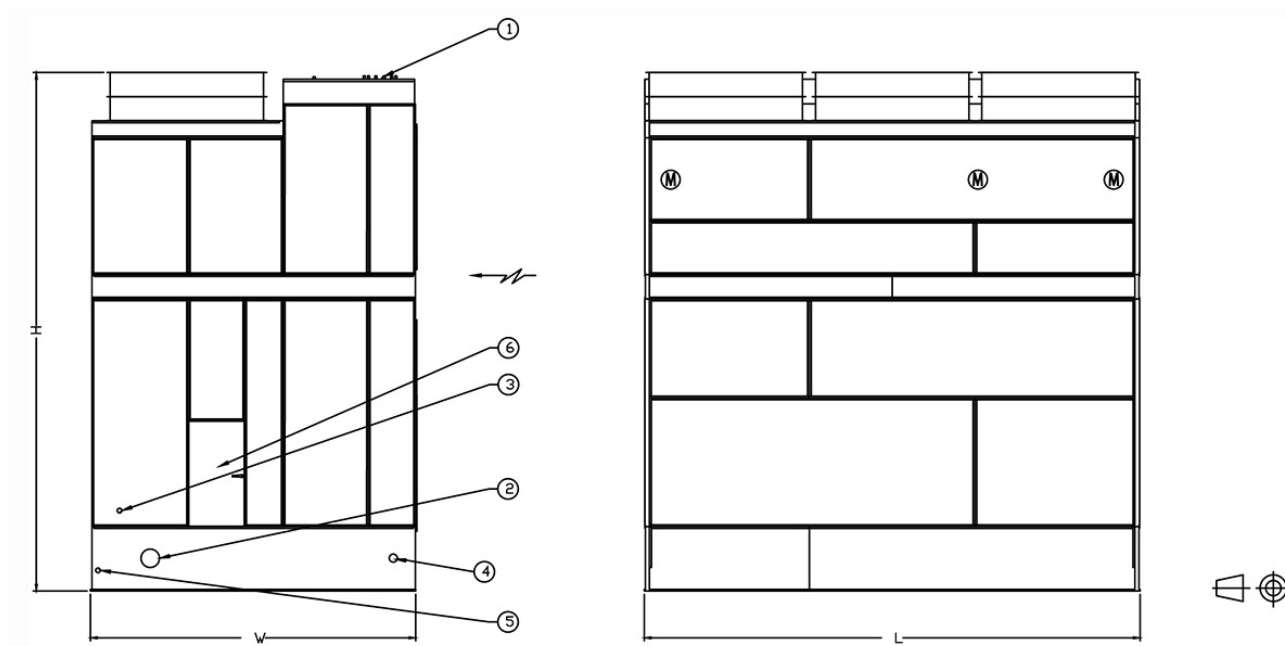
General notes

1. All connections 100 mm and smaller are MPT. Connections 125 mm and larger are beveled-for-welding.
2. Make up, overflow, suction and drain connections can be provided on end opposite to that shown; consult your BAC representative.
3. Models 1012-09 thru 1012-10, 1018-09 thru 1018-10, 1212-09 thru 1212-12 and 1218-09 thru 1218-12 are shipped in two sections per cell. The top section heights are for model 1012-09 thru 1012-10 and 1212-09 thru 1212-12, 2501 mm. For models 1018-09 thru 1018-10 and 1218-09 thru 1218-12, 2562 mm.

S1500E cooling tower performance at standard conditions

Last update 11/08/2025

XES15E 1218-09 - 1218-12



1. Water in; 2. Water out; 3. Make up; 4. Overflow ND80; 5. Drain ND50; 6. Access door.

Model	Weights (kg)	Dimensions (mm)	Air Flow	Fan Motor	Fluid Inlet	Fluid Outlet	Make Up ND
-------	--------------	-----------------	----------	-----------	-------------	--------------	------------



Oper. Weight (kg)	Ship. Weight(kg)	Heaviest Section (kg)	L	W	H						
XES15E 1218-09EE	12197	5352	3012	5480	3607	4570	32.0	(3x) 1.1	(1x) 250	(1x) 300	(1x) 40
XES15E 1218-09FE	12224	5380	3039	5480	3607	4570	35.0	(3x) 1.5	(1x) 250	(1x) 300	(1x) 40
XES15E 1218-09GE	12265	5420	3080	5480	3607	4570	40.0	(3x) 2.2	(1x) 250	(1x) 300	(1x) 40
XES15E 1218-09HE	12279	5434	3093	5480	3607	4570	48.0	(3x) 4.0	(1x) 250	(1x) 300	(1x) 40
XES15E 1218-10EE	12787	5584	3012	5480	3607	4976	33.0	(3x) 1.1	(1x) 250	(1x) 300	(1x) 40
XES15E 1218-10FE	12814	5611	3039	5480	3607	4976	37.0	(3x) 1.5	(1x) 250	(1x) 300	(1x) 40
XES15E 1218-10GE	12855	5652	3080	5480	3607	4976	41.0	(3x) 2.2	(1x) 250	(1x) 300	(1x) 40
XES15E 1218-10HE	12868	5665	3093	5480	3607	4976	50.0	(3x) 4.0	(1x) 250	(1x) 300	(1x) 40
XES15E 1218-10JE	12936	5733	3162	5480	3607	4976	55.0	(3x) 5.5	(1x) 250	(1x) 300	(1x) 40
XES15E 1218-11EE	13141	5820	3012	5480	3607	5382	35.0	(3x) 1.1	(1x) 250	(1x) 300	(1x) 40
XES15E 1218-11FE	13168	5847	3039	5480	3607	5382	38.0	(3x) 1.5	(1x) 250	(1x) 300	(1x) 40
XES15E 1218-11GE	13209	5888	3080	5480	3607	5382	43.0	(3x) 2.2	(1x) 250	(1x) 300	(1x) 40
XES15E 1218-11HE	13222	5901	3093	5480	3607	5382	52.0	(3x) 4.0	(1x) 250	(1x) 300	(1x) 40
XES15E 1218-11JE	13290	5969	3162	5480	3607	5382	57.0	(3x) 5.5	(1x) 250	(1x) 300	(1x) 40
XES15E 1218-12EE	13617	6060	3048	5480	3607	5789	36.0	(3x) 1.1	(1x) 250	(1x) 300	(1x) 40
XES15E 1218-12FE	13644	6087	3048	5480	3607	5789	39.0	(3x) 1.5	(1x) 250	(1x) 300	(1x) 40
XES15E 1218-12GE	13685	6128	3080	5480	3607	5789	44.0	(3x) 2.2	(1x) 250	(1x) 300	(1x) 40
XES15E 1218-12HE	13698	6142	3093	5480	3607	5789	53.0	(3x) 4.0	(1x) 250	(1x) 300	(1x) 40
XES15E 1218-12JE	13767	6210	3162	5480	3607	5789	58.0	(3x) 5.5	(1x) 250	(1x) 300	(1x) 40